

HempCan Labs, LLC

Certificate of Analysis

Certificate ID: 0529
 Client Sample ID: SSCT
 Lot Number: XXXX
 Sample Type: Flower - Sour Space Candy

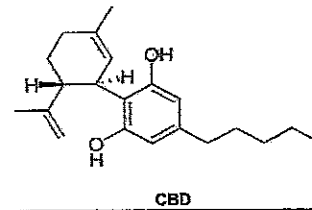
Received: 11/4/19

Farm Life Hemp LLC
 Attn: Martin McCleod

Authorization Robert Keeney, Chief Science Officer	Signature: 	Date 11/7/2019
---	----------------	-------------------



Waters
 ACQUITY
 H-Class PLUS
 UPLC with
 UV Detection



CN: Cannabinoid Profile & Potency

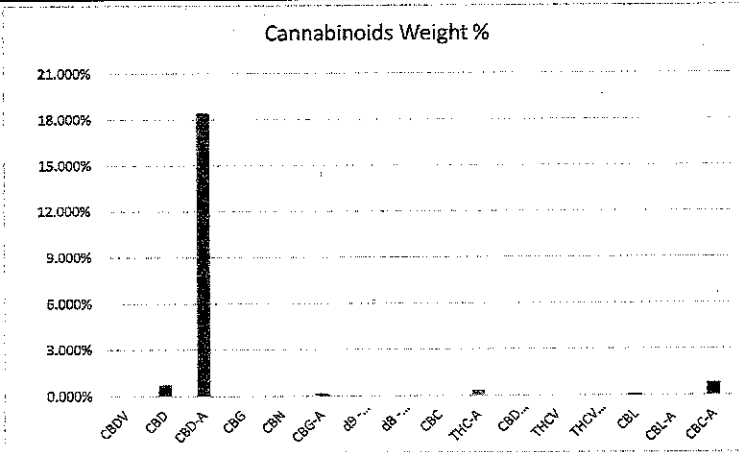
Analyst: RMK

Test Date: 11/5/19

The client Sample was analyzed for plant based cannabinoids by Liquid Chromatography (LC) The collected data was compared to data collected for certified reference standards at known concentrations.

HempCan Sample ID FLH-00002

ID	Weight %	Conc. (mg/g)
CBDV	LOQ	LOQ
CBD	01.101%	11.011
CBD-A	18.622%	186.221
CBG	ND	ND
CBN	LOQ	LOQ
CBG-A	0.118%	1.180
d9 - THC	ND	ND
d8 -THC	ND	ND
CBC	ND	ND
THC-A	0.277%	2.771
THCV	0.005%	0.046
THCV-A	0.003%	0.03
CBL	0.032%	0.322
CBL-A	0.008%	0.082
CBC-A	0.523%	5.234
Total	17.675%	176.75
Max THC	0.243%	2.43
Max CBD	17.432%	174.32
Ratio of Total CBD to THC		71.8



Max THC (and Max CBD) are calculated values for total cannabinoids after heating, assuming complete decarboxylation of the acid to the neutral form. It is calculated based on the weight loss of the acid group during decarboxylation: Max THC = (0.877 X THCA) + THC. ND = None detected above the limits of detection (LLD). LOQ = Below level of quantitation.

HempCan Labs, LLC is not responsible for the use of the information provided herein, and will not be liable for any loss or damage resulting from such use. HempCan Labs, LLC terms and conditions including testing parameters are incorporated herein.